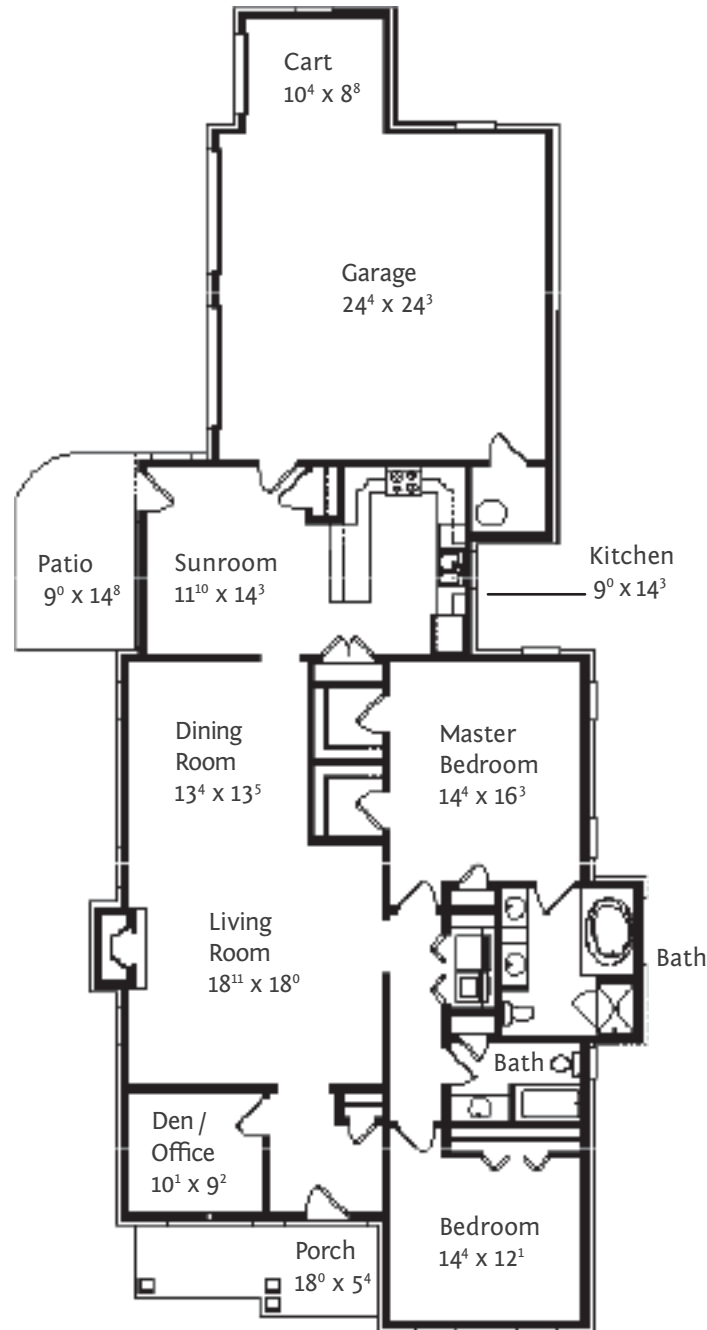


The Poinsett | Cottage Home

1,982 S/F | Two Bedroom | Two Bath



- Maintenance-Free Living
- Weekly Housekeeping
- Daily Dining
- Bill Payment
- Transportation
- Safety
- Pets Welcome
- Golf Cart
- Bring Your Own Furniture
- Transition Services

5 of 6
Cottage Home Floorplans

10 Fountainview Terrace
Greenville, SC 29607
Phone: (864) 528-5501
Cascades-Verdae.com